

# Thermal Imaging Camera Applied in Inspection and Quarantine

PROFESSIONAL THERMAL IMAGING PRODUCTS MANUFACTURER

Uncooled Focal Plane Array Detector

Thermal Imaging Camera

Thermal Imaging System



## Intelligent Human Temperature Measurement System

DM60-W system includes the thermal imaging camera, CCD camera, housing, black body and computer. Though internet, the computer can control the thermal imaging camera and CCD camera, to get the measurement data. This system could be fixed or moveable, with measurement distance of 3-10 meters, widely used at the airport, the dock, the hospital, shopping mall, bus station and ect.



Moveable working station, of great convenience and flexibility.



Far distance non-contact measurement, safe and fast



Auto calibration, non-contact, cooperate with the black body, has great measurement accuracy and stability.



Intelligent temperature measurement, with auto adjustment function.



Real time measurement data, auto measurement for more than one object

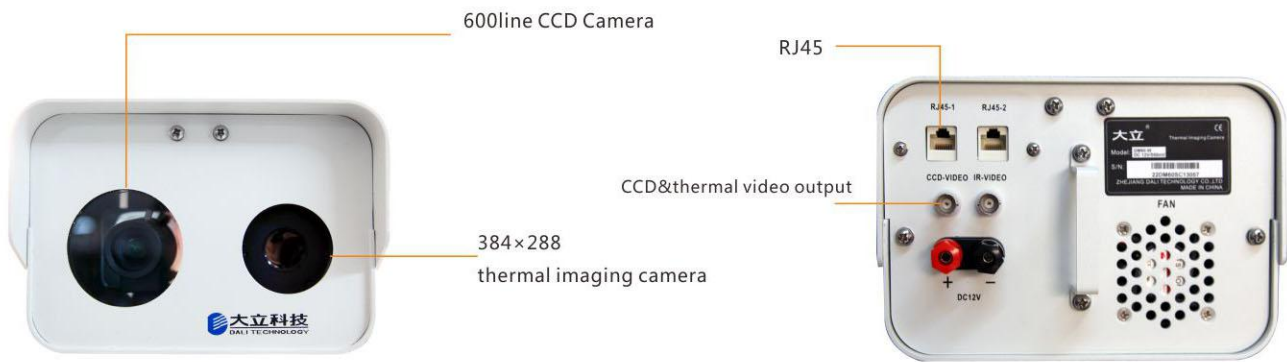


IP type thermal imaging camera, convenient for transfer



With UPS power, ensure for continuous working





System interface



**Function description:**

• **Spot measurement in full screen**

Auto-tracking the max. temperature, the real-time automatic tracking the highest temperature, realize the simultaneous alarm to multi-objectives that is over the temperature setting.

• **Multi-option of palette**

User can adjust the palette for different color scale.

• **Intelligent body temperature measurement**

• **Save the infrared images and recordings**

Images and recordings saved by the system can be recalled for further analysis. Emissivity, distance, humidity and environment temperature can be adjustable.

• **Infrared image and CCD image overlay**

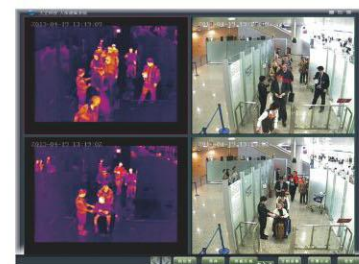
Accurate location on the CCD image, and analysis result of the measurement can be overlaid both to the infrared image and CCD image.

• **Infrared image and temperature value can be uploaded remotely**

Real-time on-site surveillance can be realized by telecom global

• **Intelligent alarm function**

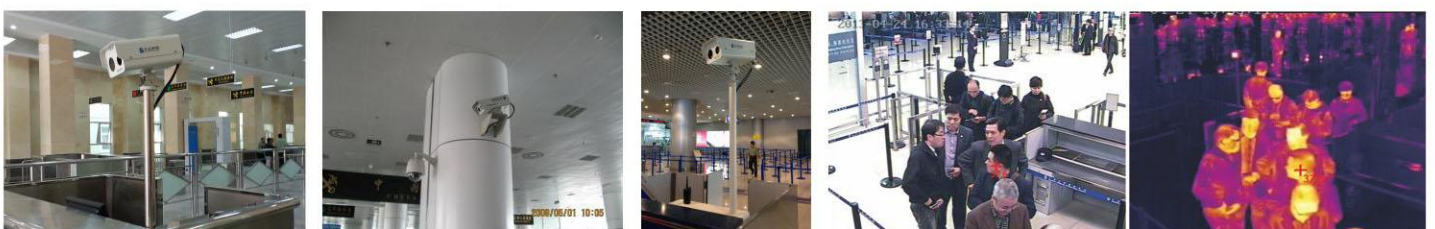
Complex alarm conditions can be settable, such as alarm temperature range, minimum alarm area, and multiple spots alarm & tracking, multiple alarm area and temperature range for avoiding disturbance of inflamer, hot water, tube, etc. Alarm delay, alarm sensitivity, and alarm temperature value can be settable by indicating with different color, while alarm by sound is also available.



Monitor Interface

**System configuration**

Thermal imaging camera	1 pcs
Analyze software	1 pcs
Control host PC(with touch screen display)	1 pcs
Black body	1 pcs
Cables	1 set
Moveable working table (optional)	1 pcs
UPS power supply (optional)	1 pcs



## DM60-W system application topology



### Parameter

Item	DM60-W
Array size	384×288
Spectral range	0°C~60°C
NETD	0.06°C
FOV	24°×18°
Focus	Auto / Manual
Frequency	50Hz
Monitor	19"
Blackbody	Automatic temperature correction
Output video format	PAL, digital format
Temperature Stability	≤±0.3°C
Repeatability	≤±0.2°C
Response time	≤0.06 秒
Visual Camera	600 line ( Network type: 2M pixels )
data transfer	RJ-45 , MPEG4/Original thermal measurement data
Control computer	The special industrial computer (with image acquisition functions)
Dimension	345×189×154mm ( Thermal imaging camera ) 600×660×1180mm ( With the mobile station )
Weight	5Kg(Thermal imaging camera) 65Kg(With the mobile station)

## Application Note

Infrared thermal imaging devices and systems can be used in the international airport immigration, the various ports, international cruise ships dock, land crossings and other places, it has the following several advantages

- 1 Non-contact temperature measurement can avoid cross-infection occurs caused by too close when measurement.
- 2 large area scan, fast temperature measurement. Thermal imaging can get the surface temperature of a lot of people instantaneously.
- 3 Passengers can complete the measurement without staying to avoid unpleasant feelings.

The following products as recommended



TE-W1



TE-W2

International Airport passenger clearance detection:

Infrared temperature intelligent screening system installed at exit and entry, transit clearance can achieve automatic warning, automatic capture, automatic recording, remote transmission and other functions from detecting clearance passenger temperature.

TE-W handheld body temperature rapid screening instrument can be used to check passengers quickly at temporary monitoring points.

## Overview of Infrared thermal imaging detecting

### ★ Why infrared thermal imaging can check body temperature, what are the advantages?

**Infrared check body temperature with the following advantages:**

#### **Quick and large area check.**

Infrared imaging using a non-contact temperature measurement instruments Image affect speed is 0.04ms, fast response. It can check one or more high temperature of populations in field of view in 1 second. (If you use a traditional thermometer detecting generally require 3 minutes per person, an ordinary point thermometer, forehead thermometer, ear thermometer detection time generally takes 4 to 5 seconds / person as a single human detection,).

#### **Long distance, safety concealment**

Testing person can complete the measurement without stopping standing inside or make any action with passive, long-distance non-contact, non-intrusive. Meanwhile, the staff away from the tested population can effectively prevent the cross-infection.

#### **Maximum surface temperature of the human body search is easy to judge**

Infrared camera can search out the highest surface temperature of detected people and calculate body temperature display through the built-in software. It's convenient to check the people temperature.

#### **Continuous detection and reliable alarm**

Infrared camera can use an external power supply to continuo body temperature sampling with temperature automatic search function. Infrared camera can quickly and easily perform temperature investigation when people continuing go through the field of view,

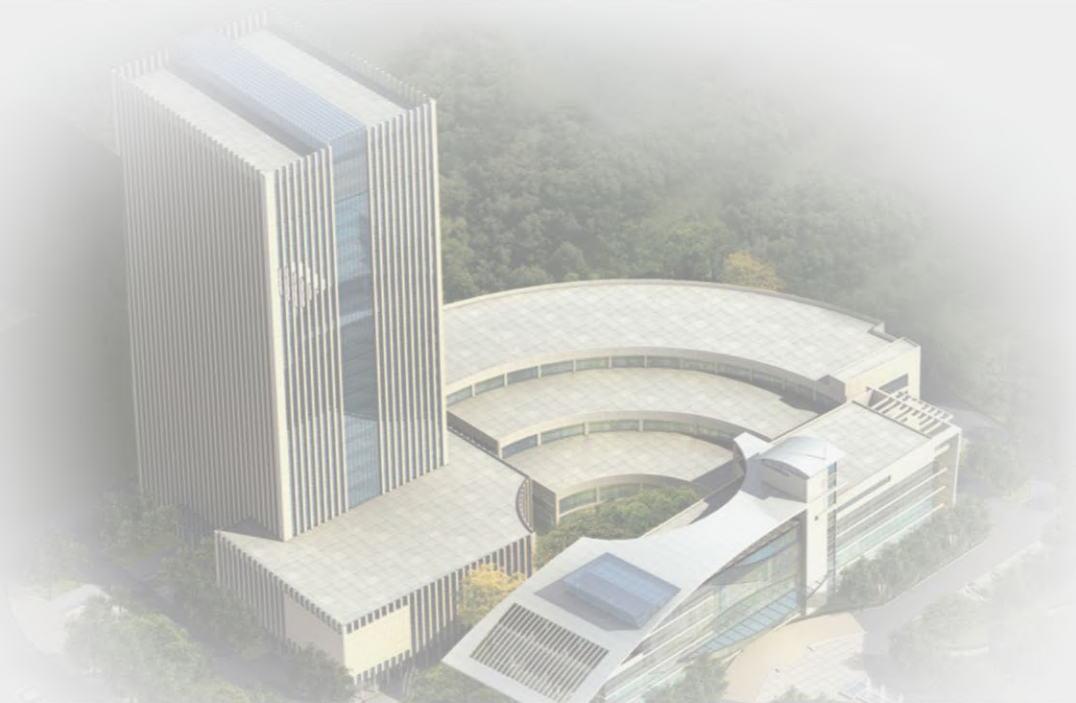
### ★ Which part of body can infrared camera detect?

The maximum body surface temperature generally is in the forehead around the bridge of the nose and eye socket and other parts, these parts has large blood vessels and skin is thin, so they are very good response to measure body temperature state, that's why human face is the best position for infrared camera to detect.









**ZHEJIANG DALI TECHNOLOGY CO.,LTD**  
Add: 639 Binkang Road, Hangzhou, P.R.CHINA, 310053  
Tel: +86-571-86695603 Fax: +86-571-86695600  
<http://www.dali-tech.com> E-mail: [market@dali-tech.com](mailto:market@dali-tech.com)